

44 Quay Central
Liverpool
L3 1DL



44 Quay Central

£170,050

Full Description

Elite Realty Invest is pleased to present Quay Central, a high specification off plan residential development located within a prime area of the Liverpool waterfront. Positioned at the heart of the Liverpool Waters masterplan, this scheme forms part of the future Central Docks cultural and leisure district and offers investors an opportunity to secure a premium asset in a transformational location.

Designed to reflect Liverpool's rich industrial heritage, the building features a contemporary warehouse inspired exterior that complements the surrounding docklands. Internally, apartments are finished to an excellent standard, combining modern design with practical layouts that appeal strongly to today's rental market.

Each apartment benefits from high quality bathrooms and en suite shower rooms, integrated wardrobe storage to all bedrooms, and carefully selected flooring throughout, including deluxe carpeting to bedrooms and durable vinyl plank flooring to living areas. Kitchens are fully fitted with integrated appliances, stone style worktops, coordinated splashbacks, and recessed LED lighting, while utility spaces include washer dryer appliances for added convenience.

Two bedroom apartments offer particularly generous master bedrooms with adjoining en suite facilities, enhancing both tenant appeal and rental performance.

Investment Highlights

- Located within the £5.5 billion Liverpool Waters regeneration scheme
- Attractive waterfront setting with views across the River Mersey
- Short walk to Liverpool city centre, bars, restaurants, and leisure amenities
- Offered below current market value
- Projected rental yields of up to 7%

Location Overview

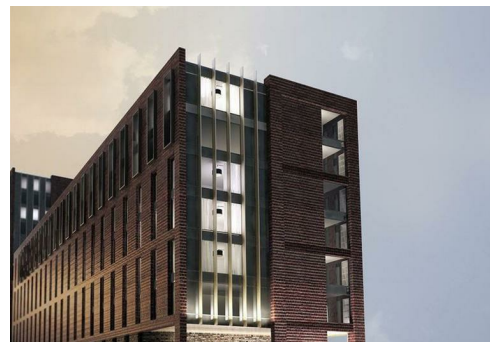
The development sits on the northern edge of Liverpool city centre, adjacent to the historic Waterloo Docks. This former industrial area is undergoing extensive regeneration, creating a new residential and cultural quarter while maintaining strong connectivity to the city core. The setting provides a strong sense of arrival into the emerging Central Docks neighbourhood and supports long term capital growth prospects.

Local Authority

Liverpool City Council

Council Tax Band C

EPC Rating



Contact

0161 470 1184

info@eliterealtyinvest.co.uk